



FIND
YOUR
MODE

Dental Implant System

- Immediate Implantation & Immediate Loading
- For All Indications
- One-Piece Implant System



modeimplant.com

DENTAL IMPLANTS

CASE FOR THE IMPLANT OR
IMPLANT FOR THE CASE?
MODE IMPLANT OFFERS
PERFECT FIT FOR ANY CASE.



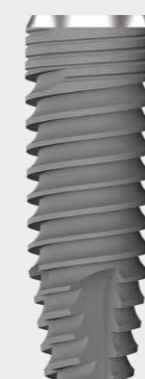
RAPID



SHORTER

Immediate Implantation & Immediate Loading

The immediate-implant group has the optimum balance between a design that provides high primary stability and a design that does not create significant stress on the bone.



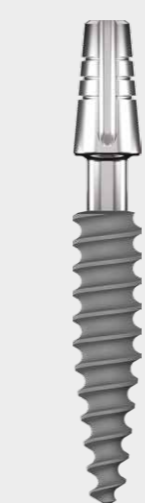
LEVEL



SHORT

For all indications

Provides perfect esthetics and clinical results for all bone types, from the simplest to the most complicated cases.



PROVO C
SERIES



PROVO S
SERIES



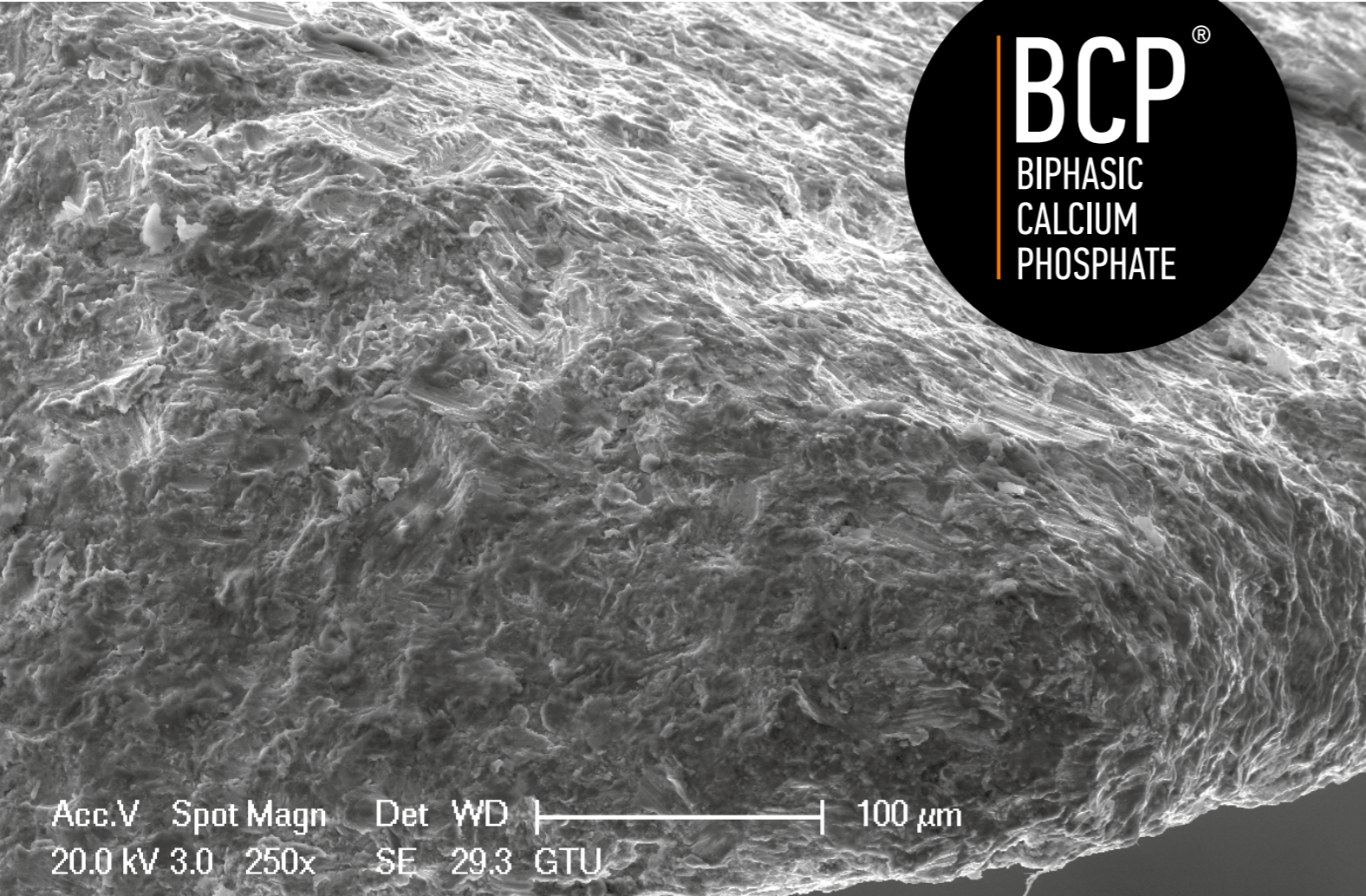
MINI
SERIES

One-Piece Implant System

You don't have to worry about choosing the right abutment anymore. With PROVO series' bendable implant system, you can easily bend the abutment part to reach the desired angle for your prosthesis.

INTERNAL CONICAL

ONE-PIECE

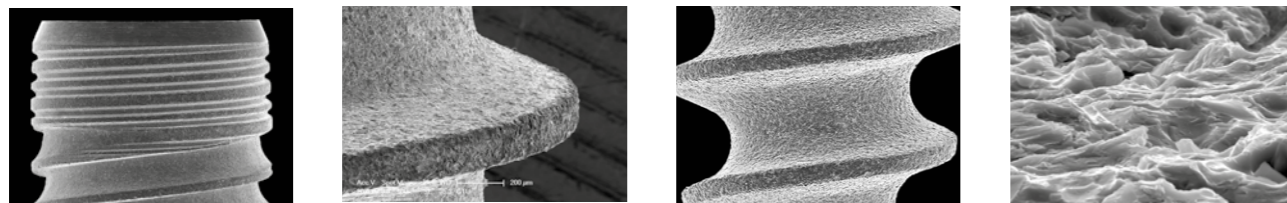


Acc.V Spot Magn Det WD |-----| 100 μm
20.0 kV 3.0 250x SE 29.3 GTU

HA Hydroxyapatite OSTEOBLASTIC BCP SURFACE MORPHOLOGY

The Perfect HA Osteoblastic homogeneous surface morphology provides an ideal Bone-Implant Contact (BIC) with 100% biocompatible Biphasic Calcium Phosphate (BCP) surface treatment.

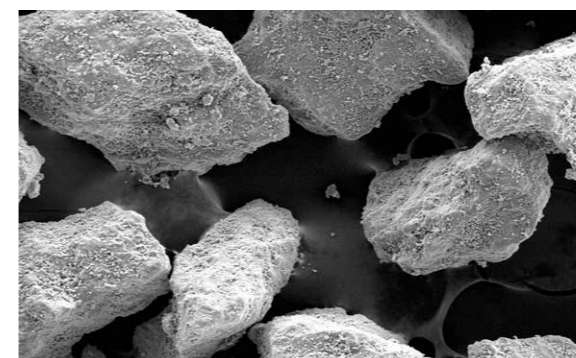
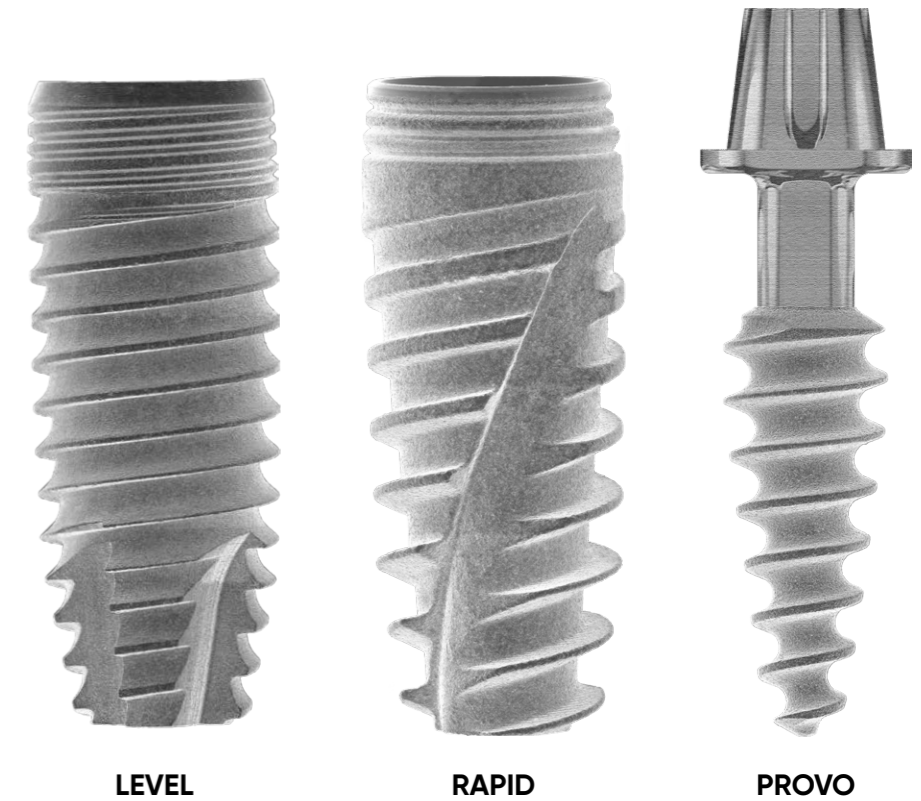
Biocompatibility Cleanliness Osseointegration



Perfect BIC (Bone-Implant Contact)

BCP Surface Treatment

Hydroxyapatite calcium phosphate ceramics are major biomaterials in the dental field. They consist of hydroxyapatite and tricalcium phosphate and show similar properties of bone minerals. MODE Implant uses biocompatible BCP (Biphasic Calcium Phosphate) containing over 65% HA and micro blast technology for surface blasting to obtain a homogenous topography.



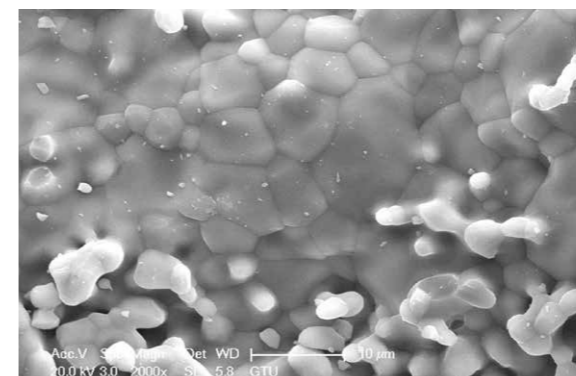
Phase Composition:

HA/B-TCP BIPHASIC CALCIUM PHOSPHATE
Hydroxyapatite.....>65%,
b-TCP, α-TCP and TTCP phase.....<35%
Other Ca-P phases.....<5%

Perfect BIC Bone-Implant Contact

MODE Implant products that are blasted with USA-originated Biphasic Calcium Phosphate and Micro-Blast Technology have strong osseointegration. Our implants have the morphology that allows osseointegration in a short time by supporting mechanical fixation.

The excellent reaction between calcium ions and bone tissue provides perfect bone-implant contact during the osseointegration process.



INTERNAL CONICAL OCTAGON CONNECTION

Innovative Octa Implant-Abutment Connection System

The Morse Taper Implant-Abutment conical connection system reduces the force points that consist of overloading stresses to the conical surfaces. This increases resistance and decreases the risk of bone resorption against the curvature and distortion moments by distributing the force.

The perfect mechanical connection design minimizes the possible load to the center and connection screw in Implant-abutment correlation. The perfect overlap with Cold Weld Connection protects against microleaks.



OCTAFIT "Color Code Platform Concept"



Ø3.3 - Ø3.7



Ø4.1 - Ø4.7 - Ø5.2

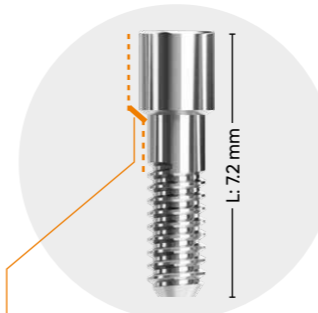
AMAZING COMBINATION OF CONICAL CONNECTIONS

Single Abutment Screw for all Abutments

All MODE models have a single screw (M1.6) for the implant-abutment connection, which provides great comfort in both clinical and laboratory settings.

Too short to break L: 7.2 mm

Short design that increases the breaking momentum to maximum compared to competing products.

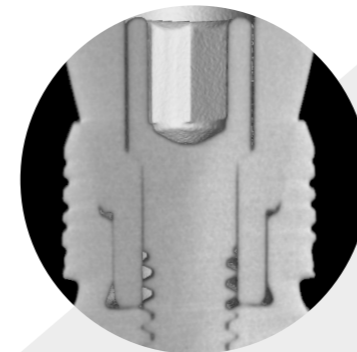


Screw and abutment conical interface

Conical seating prevents screw loosening after loading.

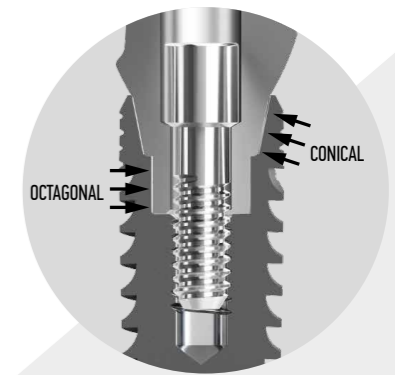
Perfect Overlap with Cold Weld Connection

Increases the mechanical strength and decreases the risk of bone resorption due to imbalanced force distribution. Seamless conical connection prevents bacterial leakage with minimum risk of "pumping effect".



Internal Conical Octagon Connection

- Secure Prosthetic Positioning
- Platform Switching
- High Esthetics
- Conical Connection & Octagonal Interlocking
- High Mechanical Strength
- Tight Sealing



Primary Stability Secured

Proven advantages of reverse buttress threads secures primary stability even in compromised bones.

- Concave sleek design reduces stress and helps self tapping while gradually compressing bone.

Root-Like Apical Part

Reinforced apex structure provides uniform distribution of forces within the bone.

- Self-drilling & self-tapping
- Ability to change path
- Secure initial stability
- Can penetrate into narrow osteotomy
- Optimal anchorage

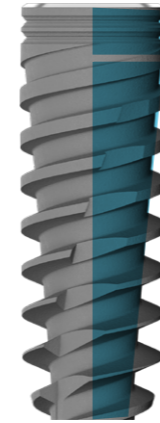
IMMEDIATE IMPLANTATION & IMMEDIATE LOADING

RAPID Implant

SHORTER Implant

Advanced Design
for Successful Clinical Results

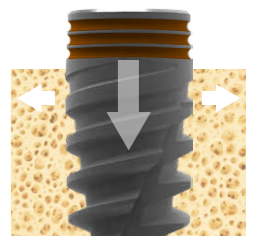
- Excellent Primary Stability even in Soft Bone
- From Single to Multiple Units
- One Stage or Two Stage Surgical Procedures
- Immediate & Early & Delayed Loading Protocols



Tapered Core & Back Tapered Coronal Design

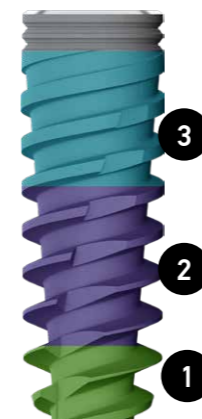
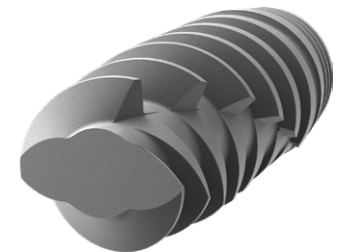
Allows for maximum alveolar bone volume around Implant for improved soft tissue support

- Reduced stress on cortical bone
- Maximum bone volume
- Maximum soft tissue volume
- Greater surface area
- High primary stability
- Easy insertion



Narrow Core Apex Design & Reverse Cutting Threads

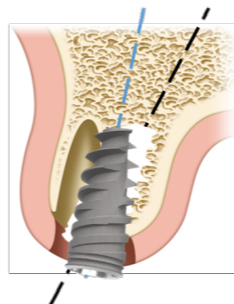
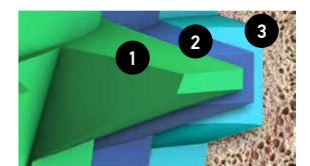
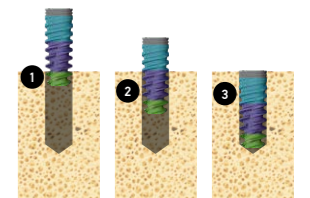
- Self drilling & self tapping
- Easy insertion
- High initial stability in apical part
- Bone condensing design
- Double spiral flutes
- Counter-clockwise cutting
- Active Axis Control
- Double thread with 2,4mm steps for faster insertion



Bone Condensing Body & Unique Thread Design

Variable thread design from coronal to apical part allows gradual bone condensing

- Provides excellent primary stability even in soft bone
- Provides narrow ridge expansion



Allows directional changes for optimal restorative position

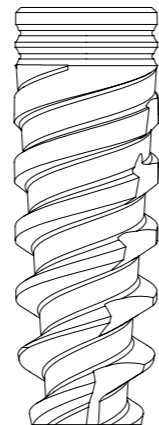
- The self-drilling feature makes it possible to change direction of the Implant during Implant placement.
- Gradual bone condensing and high initial stability



RAPID IMPLANT

Higher Primary Stability

- Back tapered coronal design & micro threads
- Tapered implant body
- Excellent primary stability in soft bone
- Flexible surgical protocol
- Immediate & early & conventional loading
- Octagon connection



DIAMETERS

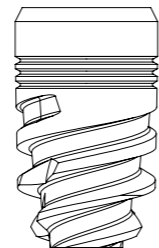
- Ø3.3 mm
- Ø3.7 mm
- Ø4.1 mm
- Ø4.7 mm
- Ø5.2 mm



SHORTER IMPLANT

Even Shorter...

- 5mm implant is the shortest screwed-in implant with internal octagon connection.
- Easy solution for the bones needing complex vertical bone augmentations
- Indicated for fixed or removable dental restorations in situations with severely resorbed bone.

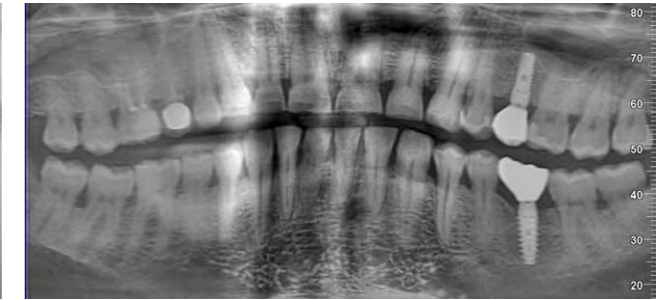


DIAMETERS

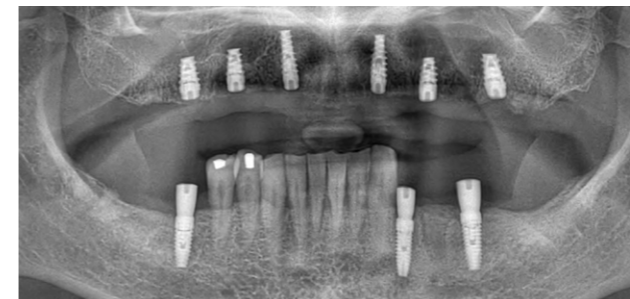
- Ø3.7 mm
- Ø4.1 mm
- Ø4.7 mm
- Ø5.2 mm



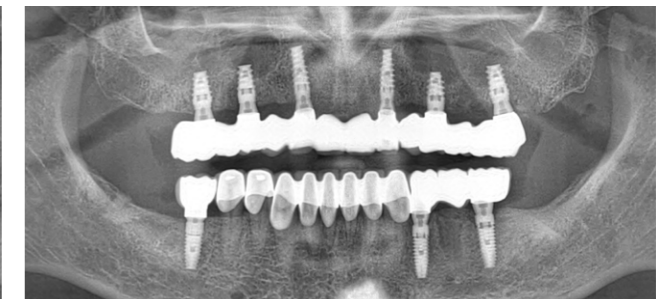
Male-48 2011



12 Years Follow-Up



Female-62 2015



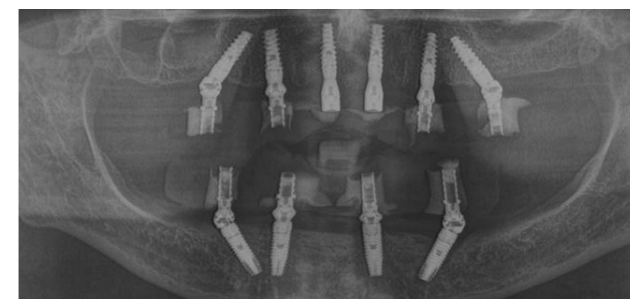
8 Years Follow-Up



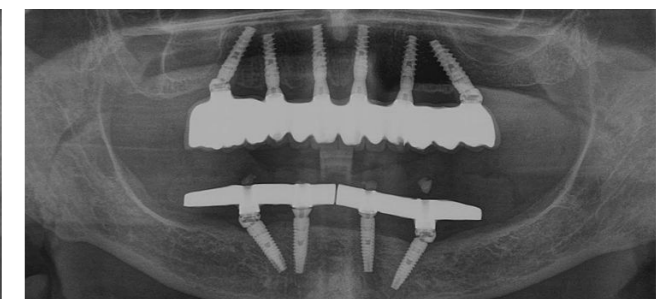
Male-45 2016



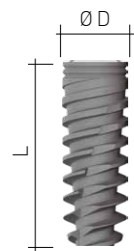
5 Years Follow-Up



Female-46 2016

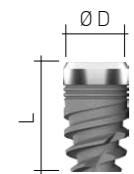


7 Years Follow-Up



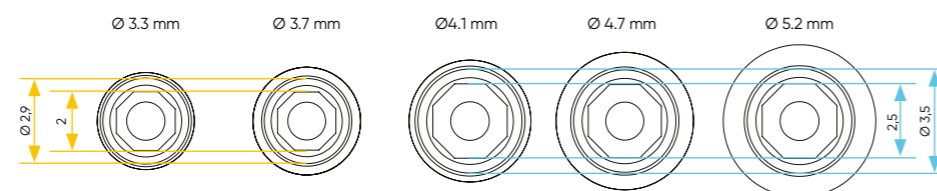
RAPID IMPLANT

Platform	NP		RP		
Implant Ø (D)	3.3 mm	3.7 mm	4.1 mm	4.7 mm	5.2 mm
Length (L)					
8 mm	01.08.08.33	01.08.08.37	01.08.08.41	01.08.08.47	01.08.08.52
10 mm	01.08.10.33	01.08.10.37	01.08.10.41	01.08.10.47	01.08.10.52
11.5 mm	01.08.11.33	01.08.11.37	01.08.11.41	01.08.11.47	01.08.11.52
13 mm	01.08.13.33	01.08.13.37	01.08.13.41	01.08.13.47	01.08.13.52
16 mm	01.08.16.33	01.08.16.37	01.08.16.41	01.08.16.47	01.08.16.52



SHORTER IMPLANT

Platform	NP		RP		
Implant Ø (D)	3.3 mm	3.7 mm	4.1 mm	4.7 mm	5.2 mm
Length (L)					
5 mm + 1 mm		01.04.05.37	01.04.05.41	01.04.05.47	01.04.05.52

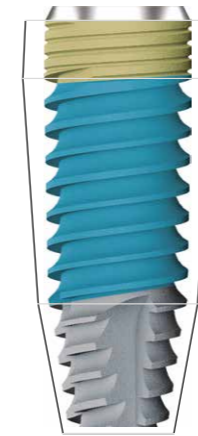


NEW TAPERED DESIGN FOR ALL INDICATIONS

LEVEL Implant
SHORT Implant

Advanced Design
for Unique Clinical Results

- Better initial stability for all bone types
- From single to multiple units
- One stage or two stage surgery
- Immediate & early & delayed loading protocol



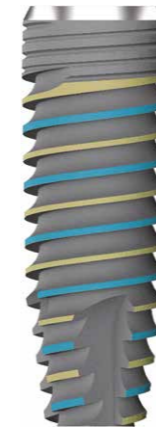
The Mode LEVEL Tapered Implant comes with a number of excellent features designed for convenient handling as well as outstanding clinical performance.

Tapered Body Core

- Smooth and gentle bone penetration
- Excellent bone grip
- High primary stability
- Improved stress distribution
- Reduced pressure on cortical bone
- Long-term esthetics

Back Tapered Coronal Design & Micro Threads

Back Tapered Design allows maximized crestal bone preservation and microgap control. Allows for maximum alveolar bone volume around implant for improved soft tissue support

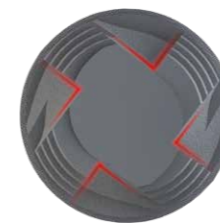
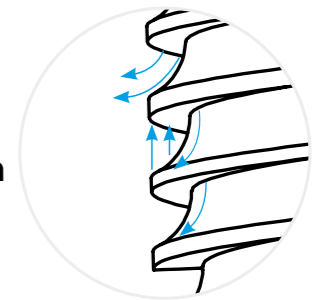


Double Thread Design

- Easy and faster implant insertion
- Greater stability
- Smoother penetration
- Excellent gripping in bone

Reverse Buttress Double Thread Design

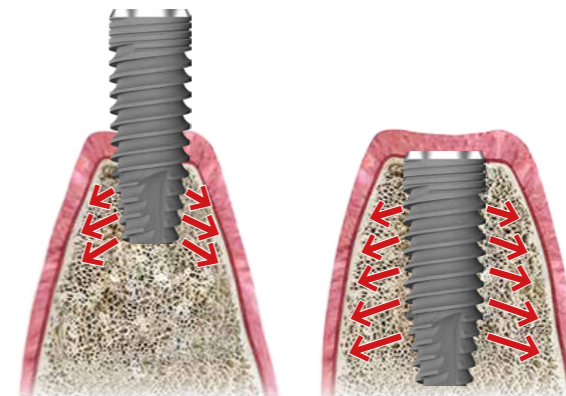
- Easy insertion
- Faster insertion
- Better initial stability
- Smoother penetration
- Excellent grip in bone



Torpedo tip with 4-cutting edges

Designed to achieve primary stability in soft bone and allows for under-preparation.

- The self-drilling feature makes it possible to change direction of the Implant during Implant placement.



Self Tapping & Self Bone Condensing

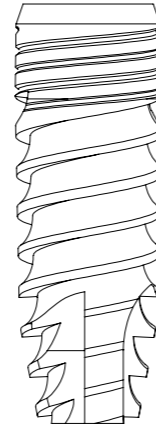
- Osteotome-like-condensing tapered implant core
- Smooth and gentle bone penetration
- High bone condensation properties



LEVEL IMPLANT

Innovative & Advanced Design

- Back tapered coronal design & micro threads
- Reverse buttress double thread
- Apically tapered implant body
- Excellent primary stability and excellent control during placement for all bone types
- Self tapping
- One stage or two stage surgery
- Immediate & early & conventional loading
- Octagon connection



DIAMETERS

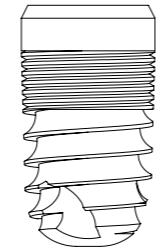
- Ø3.3 mm
- Ø3.7 mm
- Ø4.1 mm
- Ø4.7 mm
- Ø5.2 mm



SHORT IMPLANT

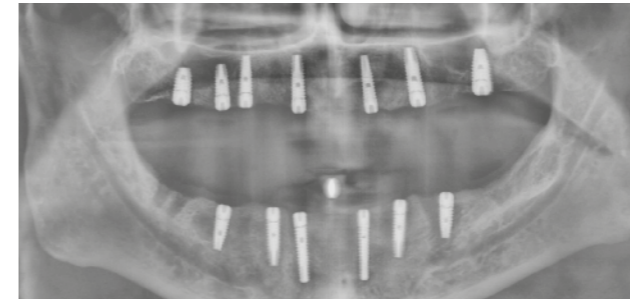
No Need for Augmentation

- 6mm+1 mm Polished Transgingival Part
- Deep reverse-buttress threads for primary stability and bone compression
- Ideal for atrophied edentulous posterior region

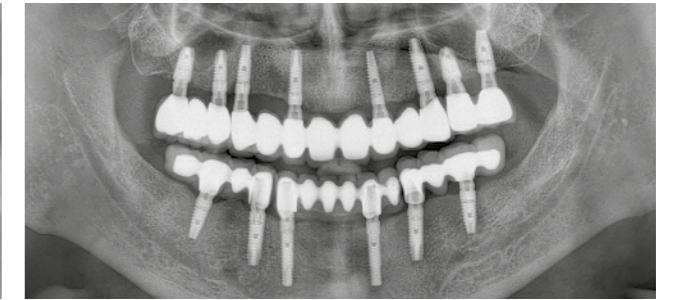


DIAMETERS

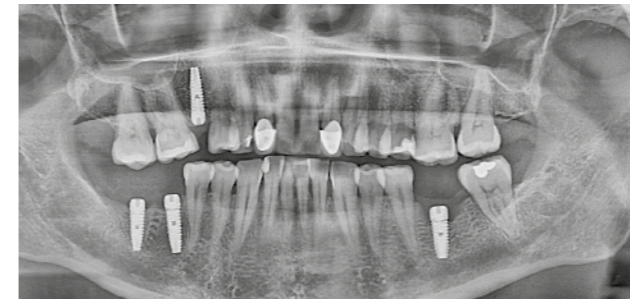
- Ø3.7 mm
- Ø4.1 mm
- Ø4.7 mm
- Ø5.2 mm



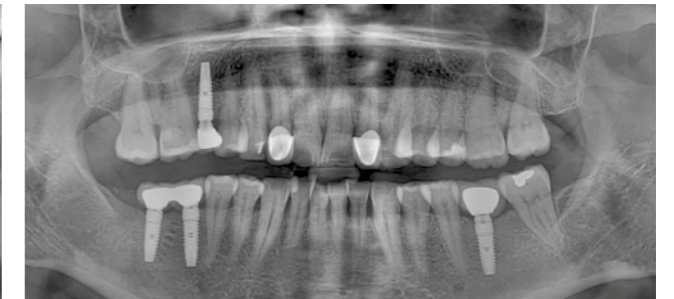
Male-54 2018



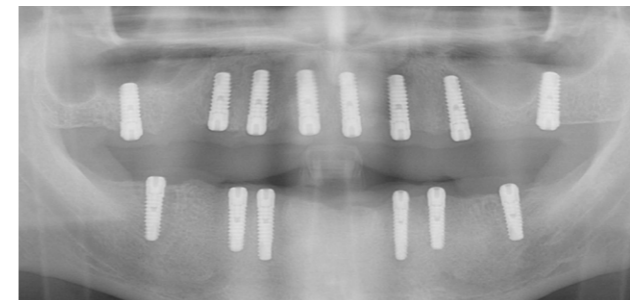
5 Years Follow-Up



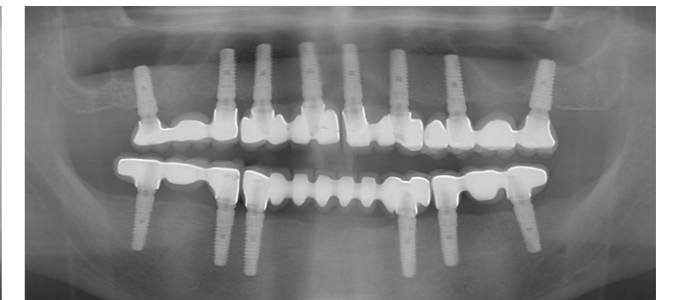
Female-44 2016



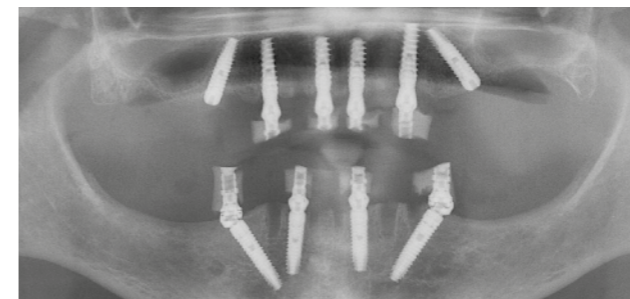
7 Years Follow-Up



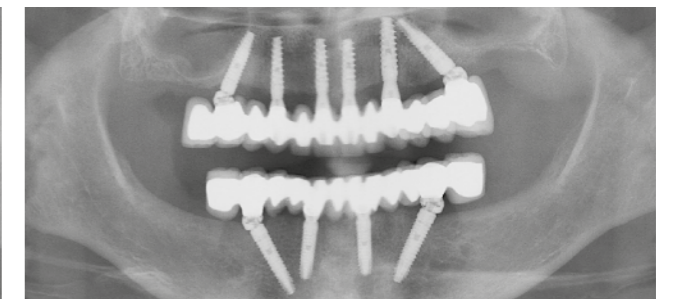
Male-56 2017



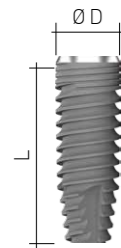
6 Years Follow-Up



Female-50 2017



6 Years Follow-Up



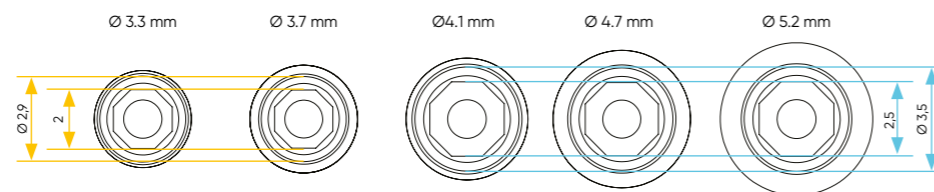
LEVEL IMPLANT

Platform	NP		RP			
	Implant Ø (D)	3.3 mm	3.7 mm	4.1 mm	4.7 mm	5.2 mm
Length (L)						
8 mm	01.07.08.33	01.07.08.37	01.07.08.41	01.07.08.47	01.07.08.52	
10 mm	01.07.10.33	01.07.10.37	01.07.10.41	01.07.10.47	01.07.10.52	
11.5 mm	01.07.11.33	01.07.11.37	01.07.11.41	01.07.11.47	01.07.11.52	
13 mm	01.07.13.33	01.07.13.37	01.07.13.41	01.07.13.47	01.07.13.52	
16 mm	01.07.16.33	01.07.16.37	01.07.16.41	01.07.16.47	01.07.16.52	



SHORT IMPLANT

Platform	NP		RP			
	Implant Ø (D)	3.3 mm	3.7 mm	4.1 mm	4.7 mm	5.2 mm
Length (L)						
6 mm + 1 mm		01.04.06.37	01.04.06.41	01.04.06.47	01.04.06.52	



ONE-PIECE IMPLANT SYSTEMS

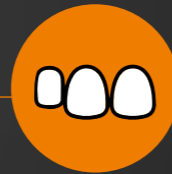
PROVO-T Temporary Bendable

PROVO-C Cement Retained Bendable

PROVO-S Screw Retained Bendable

MINI Overdenture

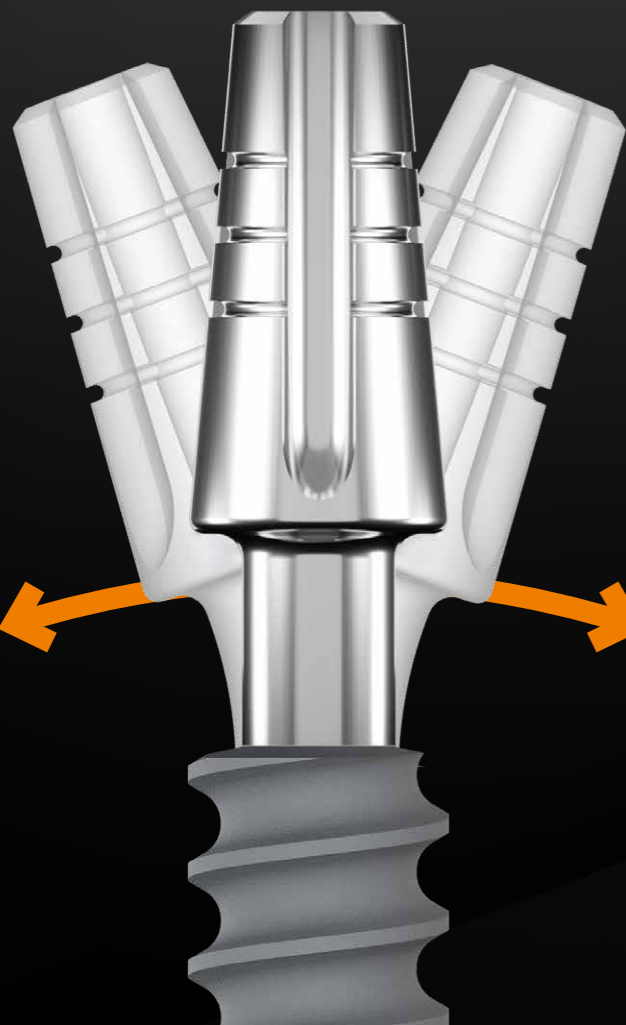
- Easy surgical procedure, flapless surgery and quick prosthodontic procedures
- Flexible solutions and immediate loading
- An extended polished and bendable neck
- Suitable for crowns, bridges and bar connectors
- Anchorage in the tuberosity and regions with large mucosal thickness
- Reduce risks of peri-implantitis



PARTIAL
RESTORATION



TOTAL
RESTORATION



- **QUICK**
- **PRACTICAL**
- **SIMPLE TO USE**

PROVO-T SERIES TEMPORARY BENDABLE ONE-PIECE IMPLANT SYSTEM

- Fast temporary restorations
- Bendable implant neck
- Good primary stability
- Direct and indirect restoration
- Relieving loads on augmented areas and soft tissue
- Slender design, ideal when space is limited
- Can be placed with open flap or flapless technique
- Polished surface protects from accumulation of bacteria at the cervical part of the implant



PROVO-C SERIES CEMENT-RETAINED BENDABLE ONE-PIECE IMPLANT SYSTEM

- Immediate loading
- Special compressive thread design
- Prosthetic alignment up to 30°
- Excellent primary stability
- Ideal for resorbed ridges
- Placement in socket extraction
- Can be placed with open flap or flapless technique
- Can be used to create multiple unit restorations
- Suitable for the upper and lower jaws
- Practical, time saving



PROVO-S SERIES SCREW RETAINED BENDABLE ONE-PIECE IMPLANT SYSTEM

- Screw retained upper part
- Immediate loading
- Allow placement in height and width deficient bones
- Prosthetic alignment up to 30°
- Excellent protection from inflammation around the implant
- Can be placed with open flap or flapless technique
- Can be used to create multiple unit restorations
- Placement in socket extraction
- Suitable for the upper and lower jaws
- Time saving for patient and dentist



MINI SERIES OVERDENTURE ONE-PIECE IMPLANT SYSTEM

- MINI one-piece Implant system provides a solution for severely atrophied jaw and narrow ridges.
- Mode MINI Implants can be placed with flapless surgery and they are designed with Ball-head with Ø2.2, Ø2.5 and Ø2.9 diameter for removable prosthesis restoration.

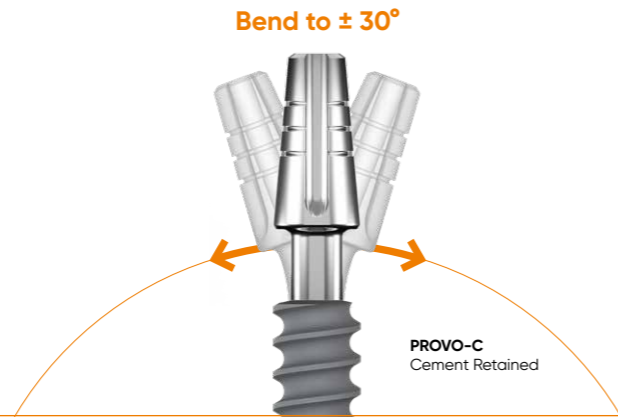
Implant Ø (D)	2.2 mm	2.5 mm	2.9 mm
L: 8 mm	-	-	01.05.08.29
L: 10 mm	01.05.10.22	01.05.10.25	01.05.10.29
L: 12 mm	01.05.12.22	01.05.12.25	01.05.12.29
L: 14 mm	01.05.14.22	01.05.14.25	01.05.14.29



PROVO BENDABLE ONE-PIECE IMPLANT SYSTEM TEMPORARY, CEMENT RETAINED, SCREW RETAINED

UNIQUE 2-AXIS ADJUSTMENT!

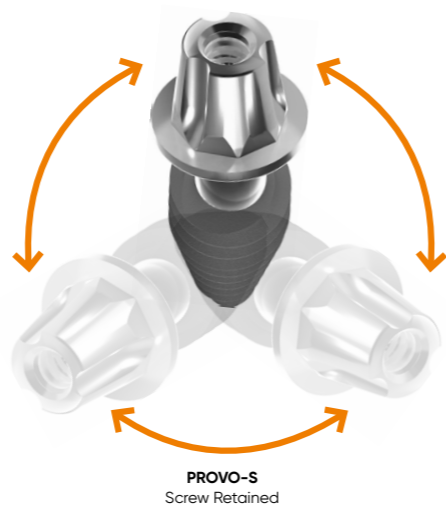
- Immediate temporary or permanent restorations
- Bendable implant neck
- Good primary stability
- Direct and indirect restoration
- Reduces loads on augmented areas and soft tissue
- Slim design, ideal when space is limited
- Can be placed with open flap or flapless technique
- Polished surface protects from accumulation of bacteria at the cervical part of the implant



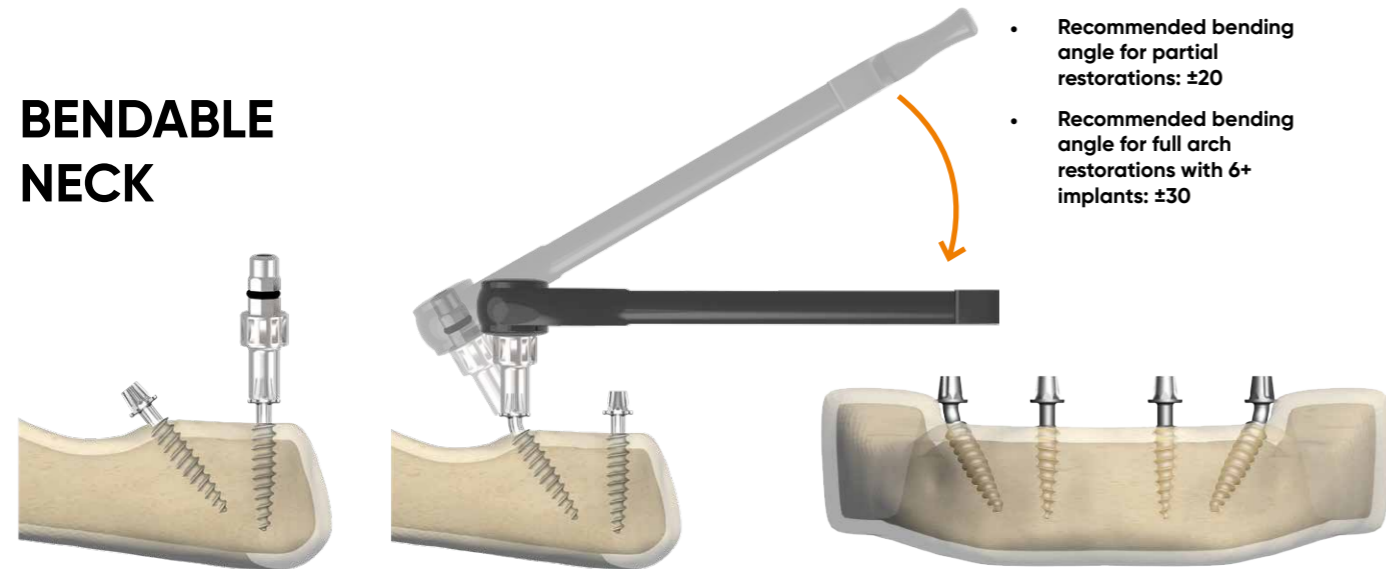
- The blasted part of the implant must be placed 0,5 mm subcrestal.
- Insertion torque value should not exceed 40 - 45 Ncm
- Torque should be reduced by pre-compression with bone tap.
- The head of bendable PROVO-T/C/S can be bent into the desired position after insertion with the adaptor and ratchet.
- Bendind should not exceed 30°
- One bending, one direction!



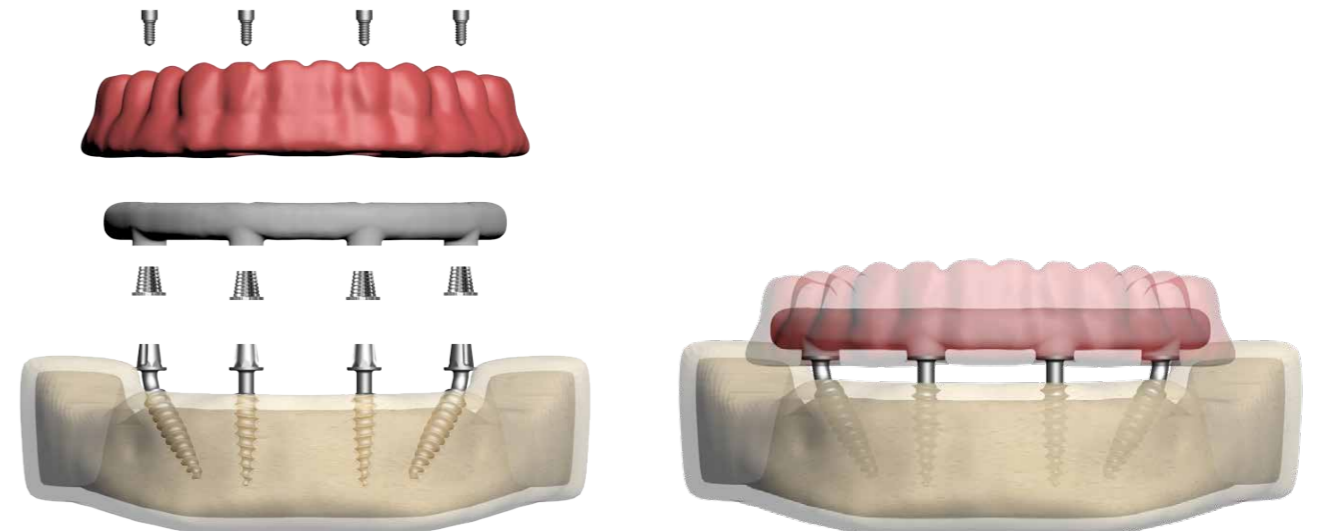
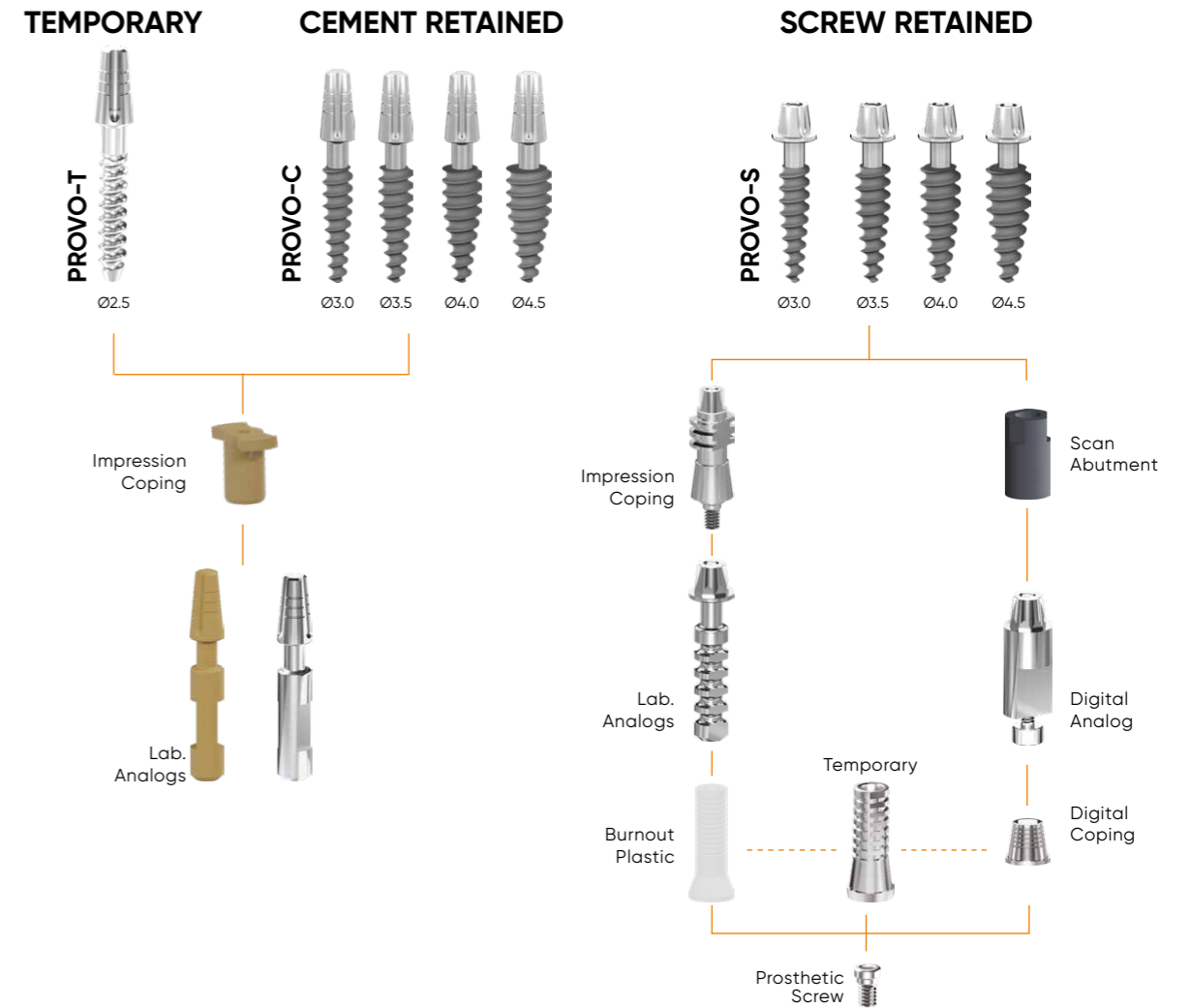
Bend to the best spot in 360°

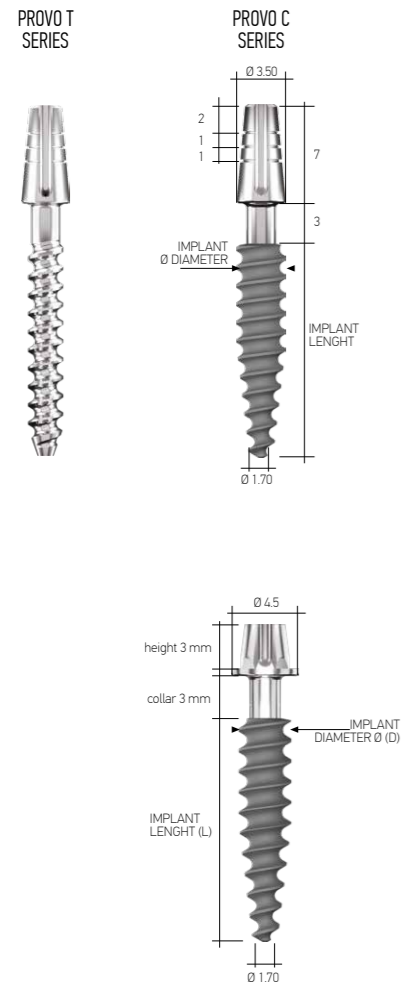


BENDABLE NECK



PROVO BENDABLE IMPLANT SYSTEM PROSTHETIC PROTOCOL





PROVO T-C SERIES

Temporary and Cemented Bendable One-Piece Implant System

	PROVO T	PROVO C	PROVO C	PROVO C	PROVO C
Implant Ø (D)	2.5 mm	3.0 mm	3.5 mm	4.0 mm	4.5 mm
L: 8 mm	-	01.06.08.30	01.06.08.35	01.06.08.40	01.06.08.45
L: 10 mm	01.06.10.25	01.06.10.30	01.06.10.35	01.06.10.40	01.06.10.45
L: 12 mm	01.06.12.25	01.06.12.30	01.06.12.35	01.06.12.40	01.06.12.45
L: 15 mm	01.06.15.25	01.06.15.30	01.06.15.35	01.06.15.40	01.06.15.45

PROVO S SERIES

Screw Retained Bendable One-Piece Implant System

	PROVO S	PROVO S	PROVO S	PROVO S
Implant Ø (D)	3.0 mm	3.5 mm	4.0 mm	4.5 mm
L: 8 mm	01.09.08.30	01.09.08.35	01.09.08.40	01.09.08.45
L: 10 mm	01.09.10.30	01.09.10.35	01.09.10.40	01.09.10.45
L: 12 mm	01.09.12.30	01.09.12.35	01.09.12.40	01.09.12.45
L: 15 mm	01.09.15.30	01.09.15.35	01.09.15.40	01.09.15.45

ONE-PIECE IMPLANT SURGICAL KIT



Torque Ratchet



Provo Implant Drills

	Ø 1.5
	Ø 3.0
	Ø 3.5
	Ø 4.0
	Ø 4.5

Provo Bone Taps

	Ø 3.0
	Ø 3.5
	Ø 4.0
	Ø 4.5

Adaptors

	Short
	Long

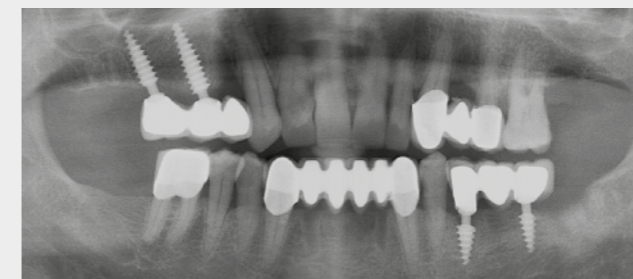
Screw Driver



Female-38 2019



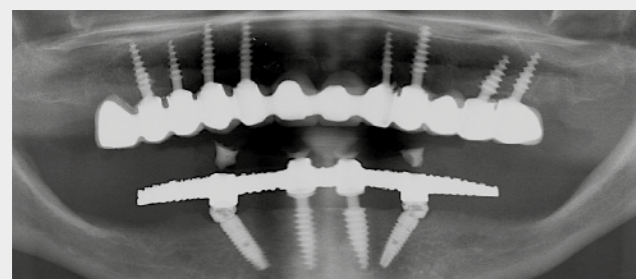
4 Years Follow-Up



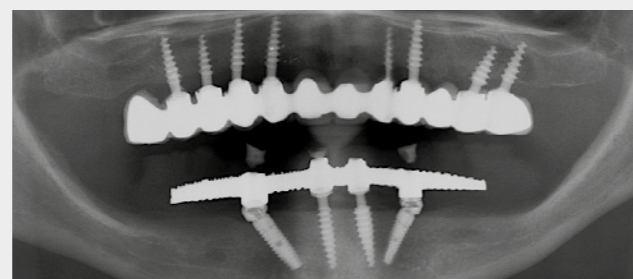
Male-54 2018



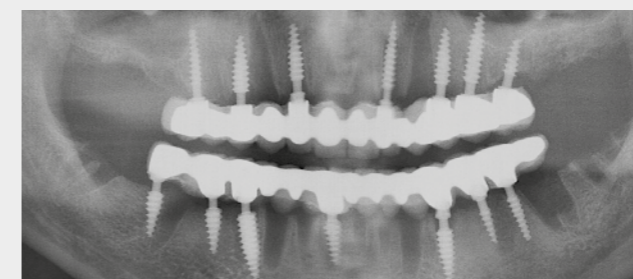
5 Years Follow-Up



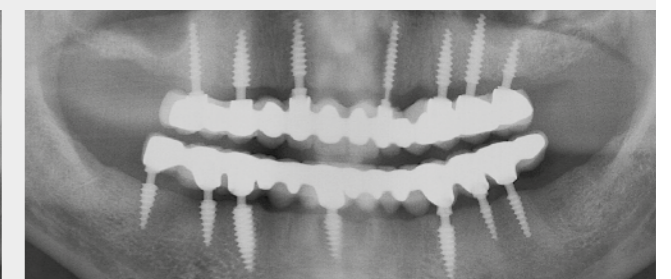
Female-64 2018



5 Years Follow-Up



Male-42 2018



5 Years Follow-Up



**GOLD MEDAL RESEARCH
AND INNOVATION AWARD
GENEVA SWITZERLAND
2017**



**"THE MANUFACTURER OF THE YEAR"
AWARD FROM USA
2018**



MDR is the European regulation that sets the standards for the safety and performance of medical devices in the EU market. It also defines the roles and responsibilities of the manufacturers, distributors, importers, and authorized representatives of medical devices.

MODE Implant has been awarded the MDR Certificate, guaranteeing that the company complies with the highest standards in production of dental implants and conducting required clinical studies.

Scan to access our
MDR Certificate



EUDAMED - European Database on Medical Devices

MODE MEDİKAL®

Abdi İpekçi Cad. No:58 Bayrampaşa 34030
İSTANBUL / TÜRKİYE

+90 (212) 612 64 09

info@modeimplant.com

modeimplant.com